

SCREAMER 250 *RACE PENTACOPTER*

USER MANUAL

SPECIFICATIONS

- Wheel base: 250mm
- Frame weight: 260g
- Flying weight: 610g (4S 1500mah lipo included)
- Flight time: 3-5 mins(Flight time reduces by using rear motor)
- Radio system: 6CH or more
- Flight controller: Naze32 6Dof /SP F3
- Battery: 4S 1500mah HV-Lipo with XT60 connector
- Max speed: >130km/h



IMPORTANT NOTES

- Screamer 250 is not a toy, it flies at a very high speed hence can be very dangerous,so please keep it away from children and don't fly over (crowded) people to minimize the possibility of accidents or injury to property or persons.
- Screamer 250 is a technically complex device, please follow the instructions to build or operate it correctly.
- For inexperienced pilots,It is highly suggested to acquire help or guide from expert pilot to avoid any crash or damage.
- Assembly or maintenance of the Screamer 250 must be performed by a competent person following the directions in the manual provided. Failure to follow directions could result in erratic dangerous flight.

SAFETY GUIDELINES

- Follow all control procedures for the radio frequency system.
- It is necessary that you know your radio system well. Check all functions of the transmitter before every flight.
- The propellers of the Screamer 250 rotate at a very high speed and will inflict serious injury. Please stay away from the rotating propellers.



<https://www.foxtechfpv.com>



<https://www.facebook.com/groups/1704437583138627/#>

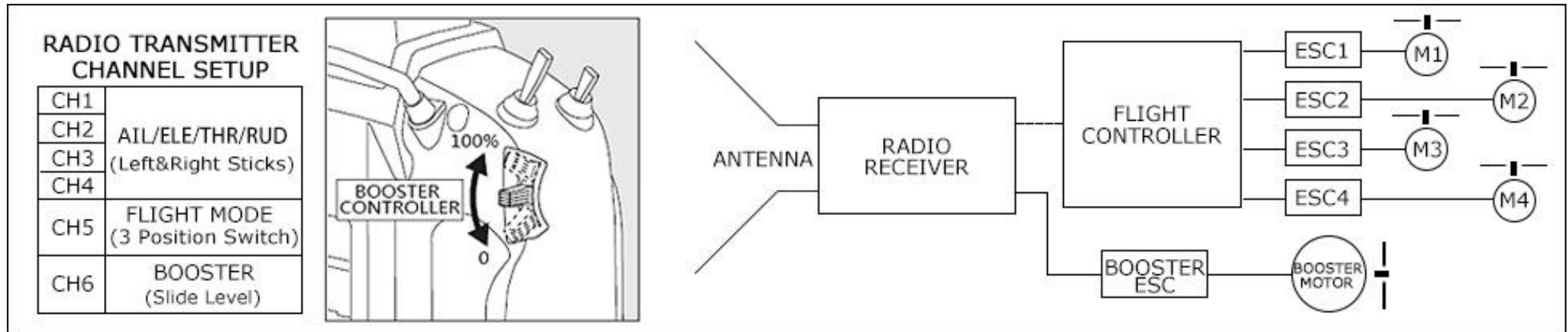


<http://www.rcgroups.com/forums/showthread.php?t=2674777>



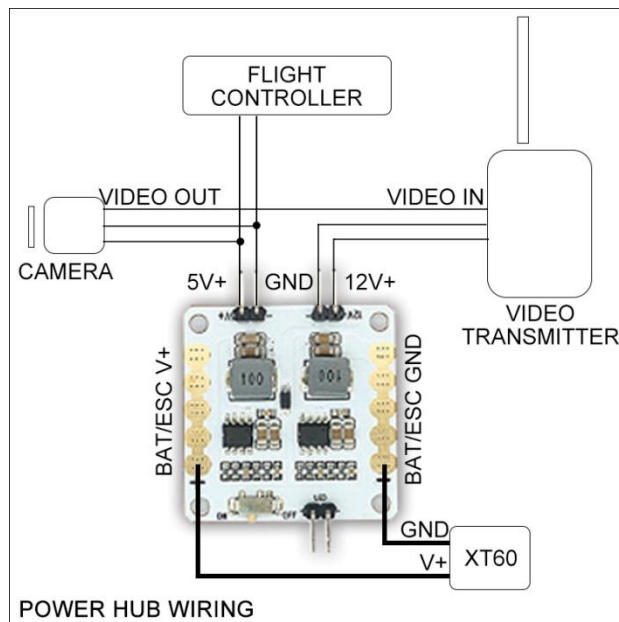
<https://www.youtube.com/user/foxtechonline/videos>

RADIO SETUP

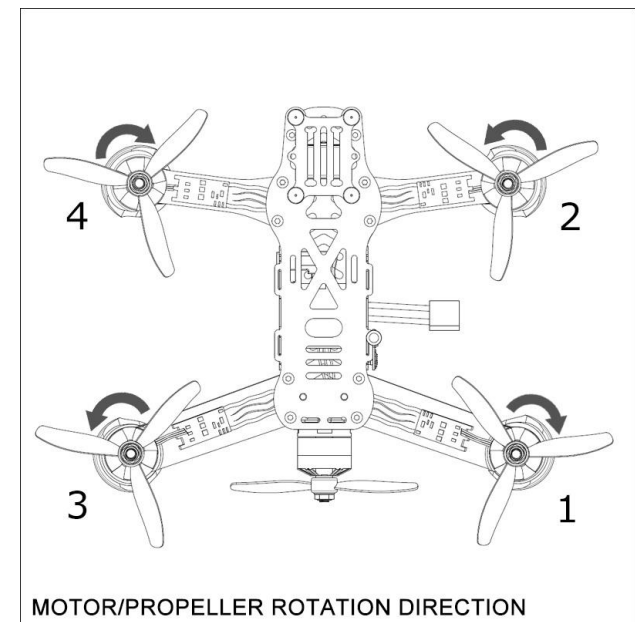


The Sbus/PPM connection requires a radio receiver with both Sbus/PPM and PWM output same time, and the booster ESC must be plugged in radio receiver directly, and assign a transmitter CH to 'Slide level' to control the booster power.

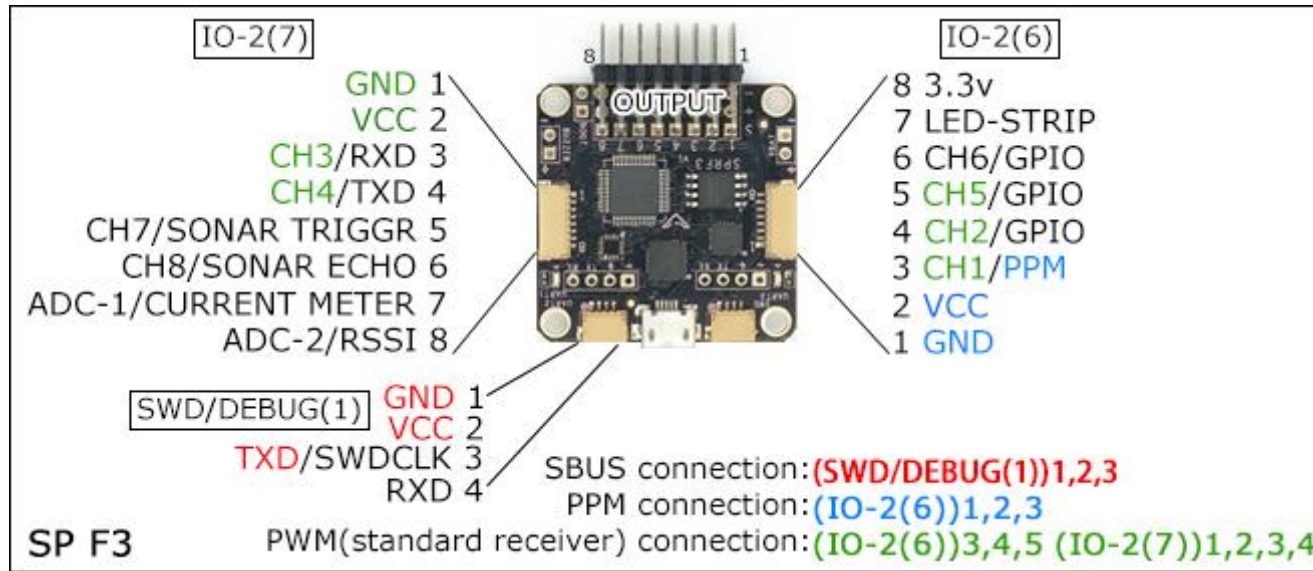
POWER HUB WIRING



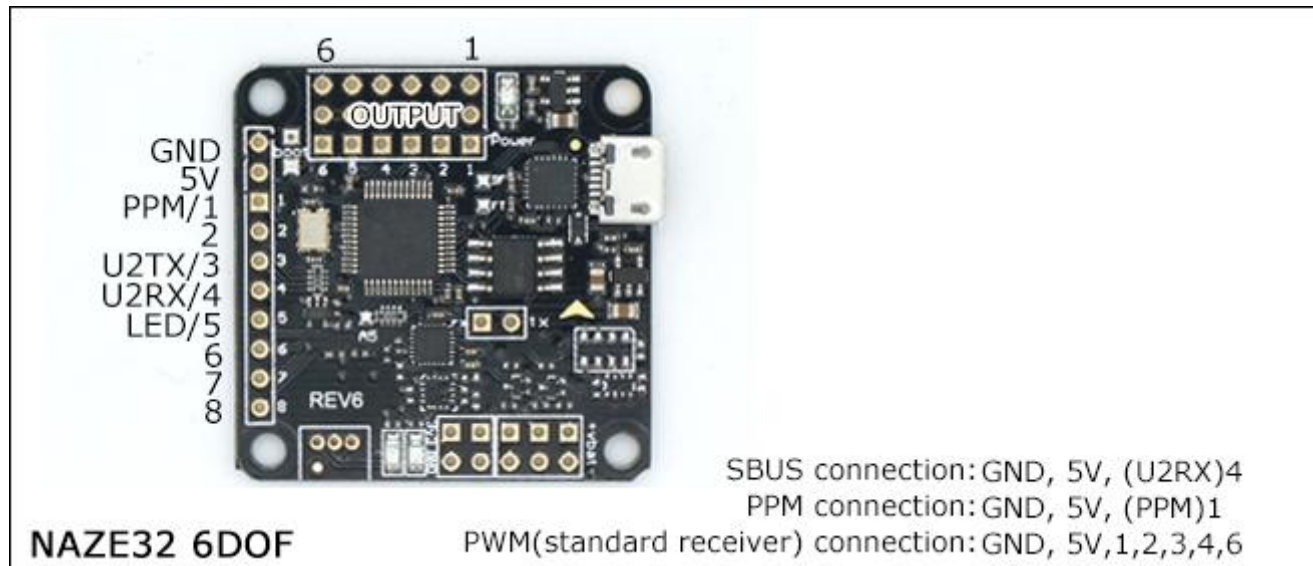
MOTOR/PROPELLER ROTATION DIRECTION

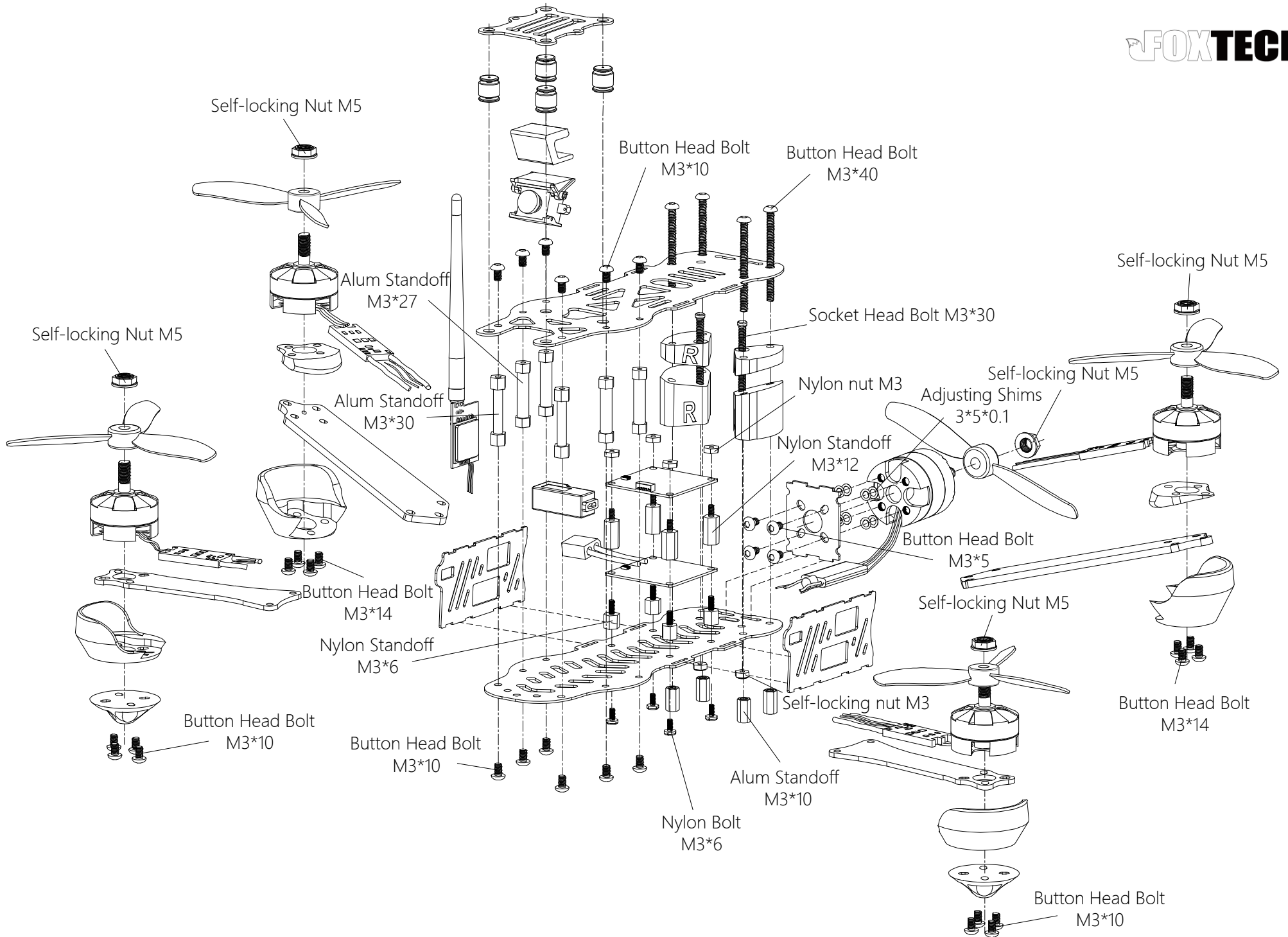


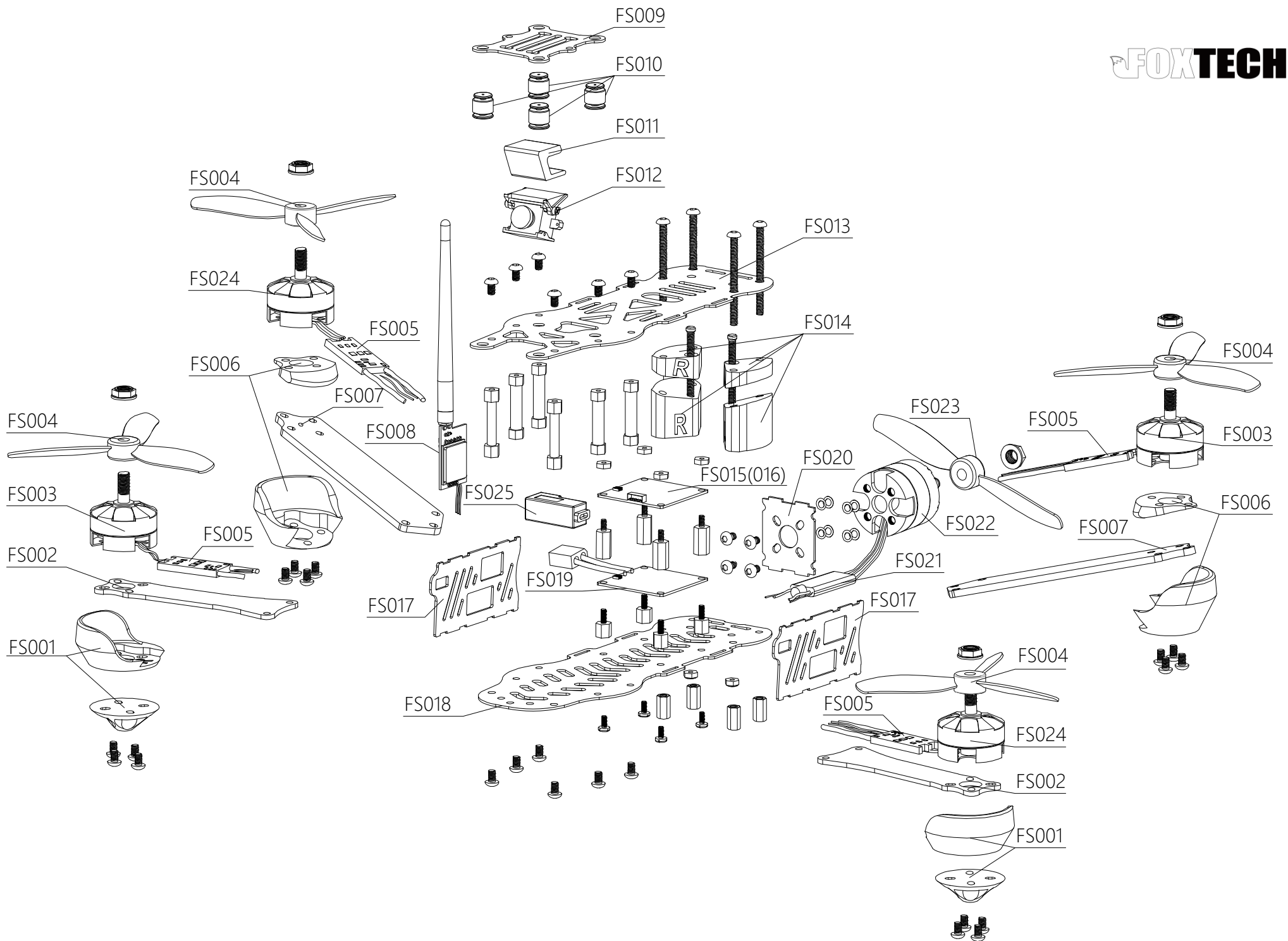
SP F3 FLIGHT CONTROLLER WIRING



NAZE32 6DOF FLIGHT CONTROLLER WIRING







PART LIST

PART NO.	DESCRIPTION	QTY.	NOTE	PART NO.	DESCRIPTION	QTY.	NOTE
FS001	Front Motor Seat	2pcs	With Front Landing Pad	FS026	Button Head Bolt M3*10	10pcs	
FS002	Front Frame Arm	2pcs		FS027	Button Head Bolt M3*14	10pcs	
FS003	Brushless Motor	1pc	Foxtech 2205 kv2300 CCW	FS028	Button Head Bolt M3*40	10pcs	
FS004	Propeller	1pc	5045 3-blade propeller(Includes CWx2 & CCWx2)	FS029	Button Head Bolt M3*5	10pcs	
FS005	ESC	1pc	Foxtech BL-S 20A	FS030	Socket Head Bolt M3*30	5pcs	
FS006	Rear Motor Seat	1pc	Includes Left Side & Right Side	FS031	Self-locking Nut M3	10pcs	
FS007	Rear Frame Arm	1pc	Includes Left Side & Right Side	FS032	Nylon Standoff M3*6	10pcs	
FS008	Video Transmitter	1pc	5.8G 600mw 40CH With Race Band	FS033	Nylon Standoff M3*12	10pcs	
FS009	Camera Mount Plate	1pc		FS034	Nylon Bolt M3*6	10pcs	
FS010	Rubber Damper	4pcs		FS035	Nylon Nut M3	10pcs	
FS011	FPV Camera Adapter	1pc		FS036	Alum Standoff M3*10	5pcs	
FS012	FPV Camera	1pc	FH10R	FS037	Alum Standoff M3*30	5pcs	
FS013	Upper Main Frame	1pc		FS038	Alum Standoff M3*27	5pcs	
FS014	Rear Arm Holder	1pc	Includes Left Side & Right Side	FS039	Adjusting Shims 3*5*0.1 ^①	10pcs	
FS015	Flight Controller	1pc	SP F3				
FS016	Flight Controller	1pc	Naze 6Dof				
FS017	Frame Support	2pcs					
FS018	Bottom Main Frame	1pc					
FS019	Power Hub	1pc					
FS020	Booster Motor Mount Plate	1pc					
FS021	Booster ESC	1pc	Foxtech BL-S 30A				
FS022	Booster Motor	1pc	Foxtech 2208 kv2500				
FS023	Booster Propeller	1pc	5045 2-blade				
FS024	Brushless Motor	1pc	Foxtech 2205 kv2300 CW				
FS025	USB Adapter	1pc	Used Only On SP F3				

①To ensure a straight flight, you may try additional shims on the booster motor mount plate to trim the thrust angle.

