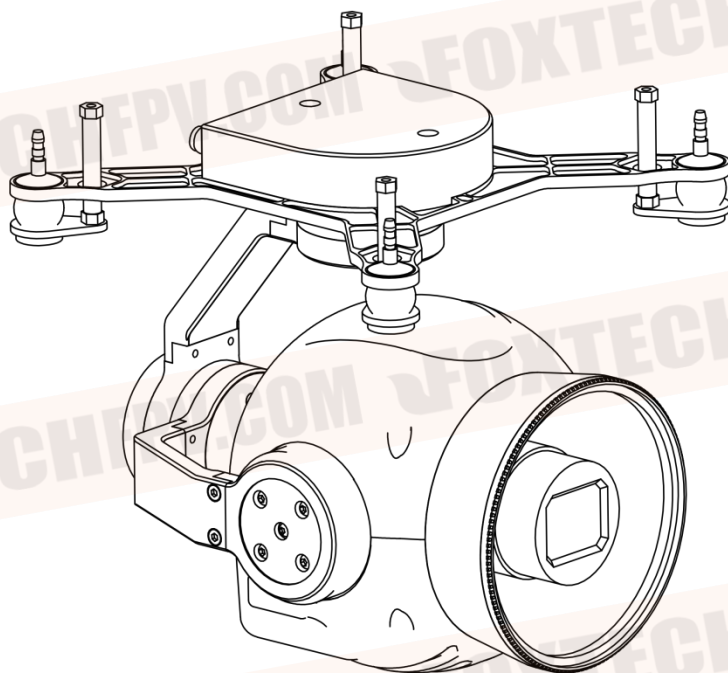




# **SEEKER-30 Max 30X Optical Zoom Camera with 3-Axis Gimbal**



## Disclaimer and warning

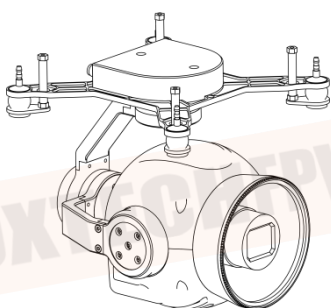
Thank you for purchasing the SEEKER series products from FOXTECH. The content mentioned in this article relates to your safety and legal rights and responsibilities. Please read this article carefully before using this product to ensure that the product has been properly set up. Failure to follow the instructions and warnings in this document may cause harm to you and the people around you, damaging the product or other surrounding items. The final interpretation of this document and all related documents belongs to FOXTECH Technology. Updates are subject to change without notice.

## Safe use

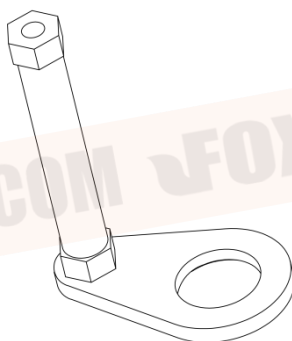
Please ensure that your aircraft is used correctly and safely. Read this manual carefully or watch the instructional video to properly install the product to the aircraft. Please follow the national or local regulations on the use of unmanned aerial vehicles and the relevant provisions and safety guidelines of the Civil Aviation Administration of China (CAAC).

FOXTECH is not responsible for damage, injury or any legal liability caused by the direct and indirect use of this product. Users should follow all safety guidelines including but not limited to this article.

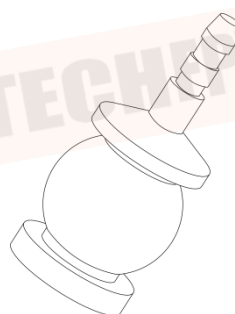
Gimbal x1



Fixed Kits x4



Damper x4



Memory Card(32G) x1

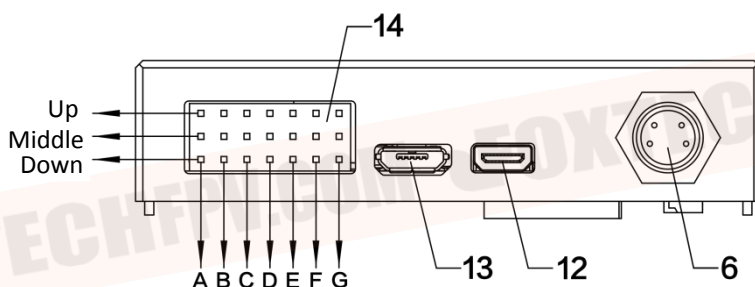


HDMI Cable x1



Seeker-30 Max adopts sony camera core, which has 30X optical zooming, and 18Mega Pixels, it is very good for taking clear photos from a good distance. And the 30X Max optical zoom camera provides 1080p 60fps video recording onboard and 1080P 50fps video output for HD video transmission back to the ground. FOXTECH SEEKER-30 Max 3-axis gimbal features excellent stability, accuracy and sensitivity. It adopts advanced 3-axis stabilization, which can keep the camera steady under any states, like high speed and intense shaking status. SEEKER-30 Max can be applied in many fields: to check the Power line tower from long distance, target tracking, emergency monitoring and rescue etc.





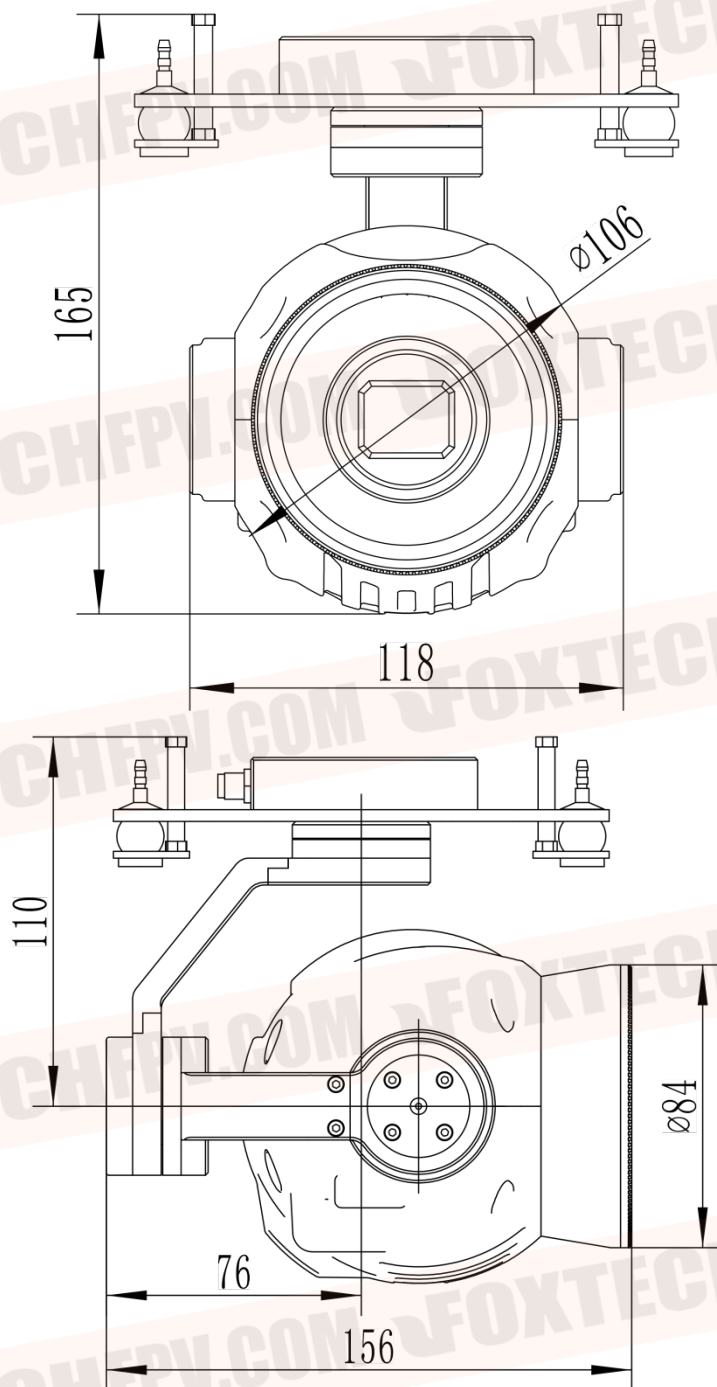
- |                         |                                    |
|-------------------------|------------------------------------|
| 1. Camera               | 8. Connecting Stick                |
| 2. Motor for Pitch Axis | 9. Lower Damping Plate             |
| 3. Motor for Roll Axis  | 10. Damper                         |
| 4. Motor for Yaw Axis   | 11. SD Card Slot                   |
| 5. Control Box          | 12. Micro-hdmi Interface           |
| 6. Power Interface      | 13. Reserved Development Interface |
| 7. Upper Damping Plate  | 14. A-G Channel(PWM)               |

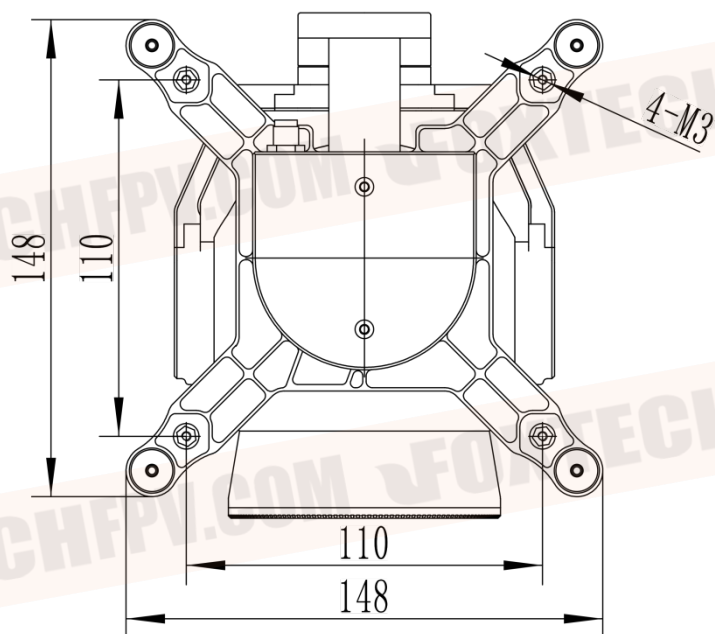
### A-G Channel(PWM)

	A	B	C	D	E	F	G
Up	PWM1	PWM2	PWM3	PWM4	PWM5	PWM6	TX
Middle	+ 5V	+ 5V	+ 5V	+ 5V	+ 5V	+ 5V	RX
Down	GND	GND	GND	GND	GND	GND	GND
Definition	Roll	Pitch	Zoom	Yaw	Mode Switch	REC/SNAP	Serial Port Control



Unit: mm





## Installation

### 1. Preparation

#### 1.1 Supported installed device types

The Seeker-30 MAX gimbal needs to be used with HD image transmission system (1080P).

#### 1.2 Supported SD Card Types

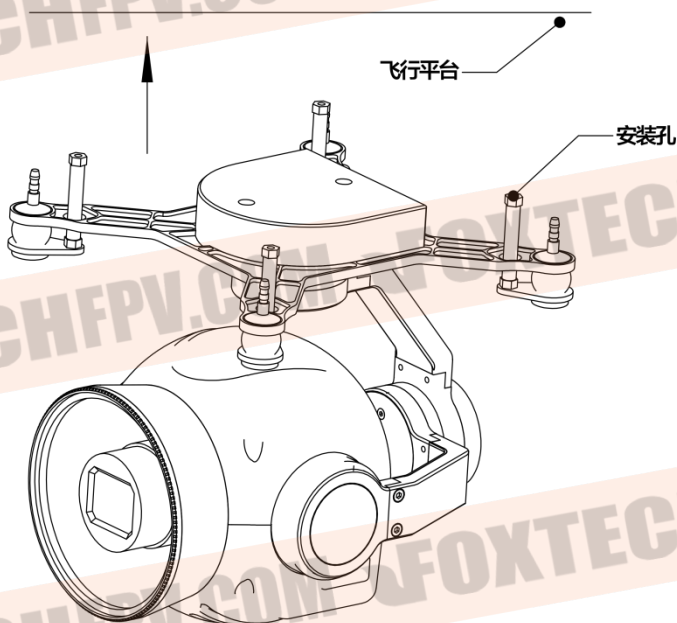
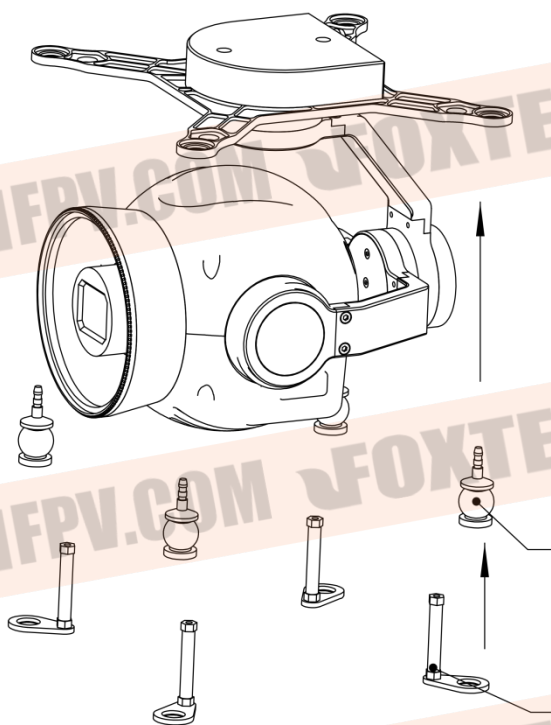
The gimbal camera SD card supports up to 128GB. Please use an SD card of Class10 or UHS-1 and above to ensure normal video recording.

### 2. Install the Gimbal

2.1 Assemble the fixed kit, the damping ball and the Seeker-30 Max.

2.2 Mount the assembled gimbal on the flight platform through the fixing holes.

2.3 Install the SD card.



## Operation:

It is recommended to use the SBUS to control the gimbal, please insert the SBUS device into the A channel when use it.

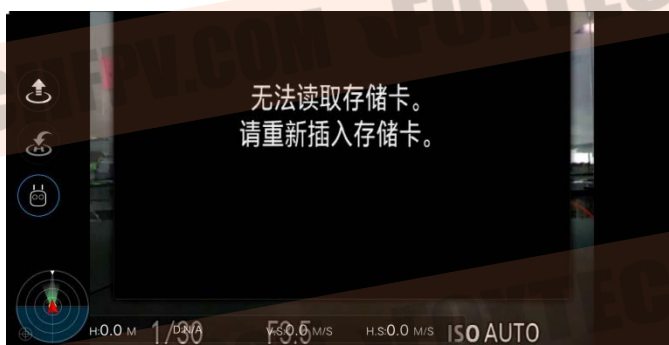
Channel	Operation	Function	Notes
RC CH1	Middle->up	Roll Control : image clockwise	Rotating speed is linearly related to the gear value
	middle->down	Roll Control : image anticlockwise	
	middle	Roll Control : Pause, stand by	
RC CH2	middle->down	Pitch Control : up	Rotating speed is linearly related to the gear value
	middle->up	Pitch Control : down	
	middle	Pitch Control : pause , stand by	
RC CH3	middle->up	Zoom Control : small zoom	the gear speed determines the zoom speed
	middle->down	Zoom Control : large zoom	
	middle	Zoom Control : Pause . stand by	
RC CH4	middle->down	Yaw Control : turn left	Rotate speed is linearly related to the gear value
	middle->up	Yaw Control : turn right	
	middle	Yaw Control : pause . stand by	
RC CH5	up	Lens straight down	
	middle	Tracking mode	
	down	Gimbal lock mode	
RC CH6	middle->up	Taking photo	
	middle->down	REC, one more operation and it will stop, and repeat this operation will alternate REC and Stop	
	middle	standby	
RC CH7			
RC_CH8	down	standby	
	down->up	One key back to center	

### Remark:

1. Dial the control switch to the middle position before turn on the remote controller.
2. One-button to temperature calibration: RC\_CH5 channel is quickly changed from mid position→low→mid→low position (completed within 900ms). The gimbal enters the temperature calibration mode.

### Note:

1. If the Seeker-30 Max is directly powered off while recording, an error will be reported after the gimbal is restarted. As shown in Figure 1. Solution: Press the reset button on the bottom of the gimbal.
2. The SD memory card must be inserted before using Seeker-30 Max, otherwise an error will be reported, as shown in Figure 2. Solution: Insert the SD memory card after power off and then restart the gimbal.



3. Ensure that there is no obstruction within the activity scope of the gimbal, otherwise it will cause serious consequences such as the gimbal not working properly or even burning.

4. Seeker-30 MAX is precision equipment. Do not add light shield, payload and other items, otherwise it will cause serious consequences such as poor performance of the gimbal and even burning.
5. Please keep the lens clean and wipe it with a clean glasses cloth. The dirty lens may cause the slow focus speed or even can't focus etc.
6. Please operate the interface when the device is powered off, especially the SD card interface, to prevent equipment damage.
7. Do not pull out the SD card during pictures- taking or recording, otherwise the images obtained during shooting may be lost.
8. Do not disassemble or repair it yourself, otherwise you will not be able to enjoy the warranty policy.
9. Our company reserves the right to modify the product parameters, performance and other information, all above may change without further notice.

## Specification

Working Voltage: 4S-6S(14.8V~ 22.2V)

Weight: 700g

Size:156x148x165mm

Working temperature: -5°C~ 45°C

Storage temperature: -20~+60°C

Vibration Range: Pitch&Roll&Yaw:  $\pm 0.03^\circ$

Range of control angle: Pitch: -120°to +30° Roll: -40°to +40° Yaw: -170°to +170°

Control Signal: Sbus, PWM

Storage: SD card(32G)

Video Output Port: miro-HDMI output

Video Output resolution: 1080P/50fps

Camera:

Sensor: CMOS:1/2.3", 18Mega Pixels

Focal Length: 24-720mm

Optical Zoom: 30X

Digital Zoom: 4X

Zoom Mode: Auto

Image Resolution: 4896x3672

Image Format: JPEG

Video storage: 1920x1080,60fps

Working Mode: Video, Photo

Exposure Mode: Auto